

Wireless Speaker System with Subwoofer

User's Guide for Model IHB18 v2138-01



FCC WARNINGS

Warning: Changes or modifications to this unit not expressly approved by the party responsible for compliance could void the user's authority to operate the equipment.

NOTE: This equipment has been tested and found to comply with the limits for a Class B digital device, pursuant to Part 15 of the FCC Rules. These limits are designed to provide reasonable protection against harmful interference in a residential installation. This equipment generates, uses, and can radiate radio frequency energy and, if not installed and used in accordance with the instructions, may cause harmful interference to radio communications. However, there is no guarantee that interference will not occur in a particular installation. If this equipment does cause harmful interference to radio or television reception, which can be determined by turning the equipment off and on, the user is encouraged to try to correct the interference by one or more of the following measures:

- Reorient or relocate the receiving antenna.
- Increase the separation between the equipment and receiver.
- Connect the equipment into an outlet on a circuit different from that to which the receiver is connected.
- Consult the dealer or an experienced radio/TV technician for help.

ADDITIONAL WARNINGS

- WARNING: Changes or modifications to this unit not expressly approved by the party responsible for compliance could void the user's authority to operate the equipment.
- WARNING: Shock hazard - Do Not Open.
- Caution and marking information is located at the rear or bottom of the apparatus.
- Mains plug is used as disconnect device and it should remain readily operable during intended use. In order to disconnect the apparatus from the mains completely, the mains plug should be disconnected from the mains socket outlet completely.
- CAUTION: TO PREVENT ELECTRIC SHOCK, MATCH WIDE BLADE OF PLUG TO WIDE SLOT, FULLY INSERT.
- Objects filled with liquids, such as vases, shall not be placed on the apparatus
- WARNING: Do not place this unit directly onto furniture surfaces with any type of soft, porous, or sensitive finish. As with any rubber compound made with oils, the feet could cause marks or staining where the feet reside. We recommend using a protective barrier such as a cloth or a piece of glass between the unit and the surface to reduce the risk of damage and/or staining.



WARNING : This product can expose you to chemicals including lead, which is known to the State of California to cause cancer and birth defects or other reproductive harm. For more information go to www.P65Warnings.ca.gov. **This product meets and complies with all Federal regulations.**

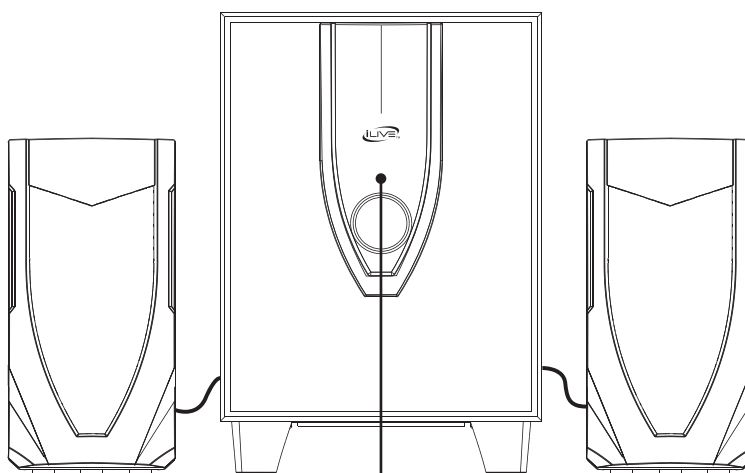
Overview

Features

- 2.1 channel stereo sound
- Built-in amplifier
- 3 speakers: left, right, and subwoofer
- Bluetooth Wireless range: 60 ft
- Voice prompts announce speaker functions
- Analog volume control
- Aux In (3.5 mm audio input)
- AC power: built-in AC power cable

Includes

- 3.5mm audio cable
- User's guide



LED Indicator

Bluetooth Pairing = Flashing Blue

Bluetooth Paired = Solid Blue

Aux In = Green

Pair Bluetooth/Source

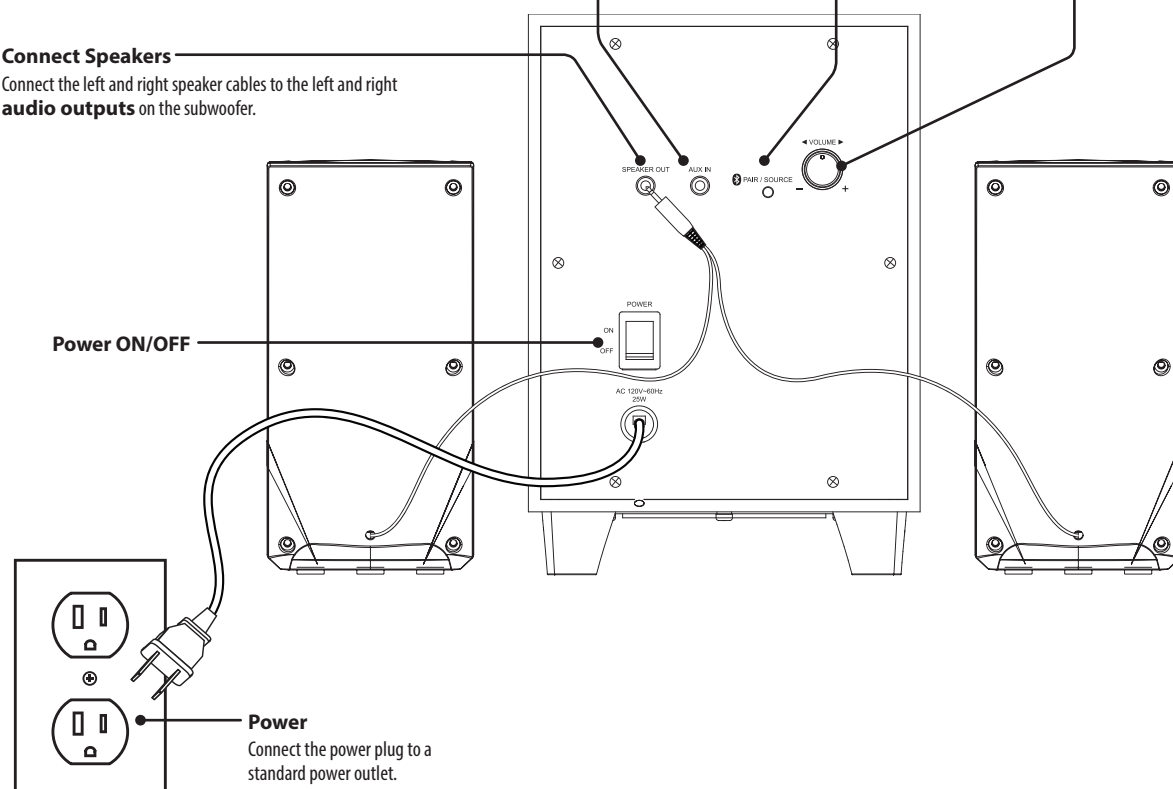
Press and hold to pair.

Press to change source between Bluetooth and Aux In.

Volume Up/Down

Connect Speakers

Connect the left and right speaker cables to the left and right audio outputs on the subwoofer.



Power ON/OFF

Power

Connect the power plug to a standard power outlet.

Bluetooth Wireless Audio

Pairing to a Device & Playing Audio

After initial pairing, the unit will stay paired unless unpaired manually by the user or erased due to a reset of the device. If your device should become unpaired or you find it is unable to connect, repeat the steps listed here.

1. Power ON the unit and press the **Source button** to switch to Bluetooth Mode.
2. Press and hold the **Pair button** to begin pairing. The **LED Indicator** will begin quickly flashing blue. *When pairing, remain within 3 feet of the unit.*
3. From your smartphone or other Bluetooth device, access Bluetooth Settings and search for nearby devices. Select **IHB18** when it is discovered. *Refer to the user's manual for your specific device for further instructions on pairing and connecting Bluetooth devices.*
4. When successfully paired, the **LED indicator** will turn solid blue and an chime will sound from the speaker.
5. Audio played through the connected Bluetooth device will now be heard through the speakers. Use the controls on the connected device to select and begin playing audio.

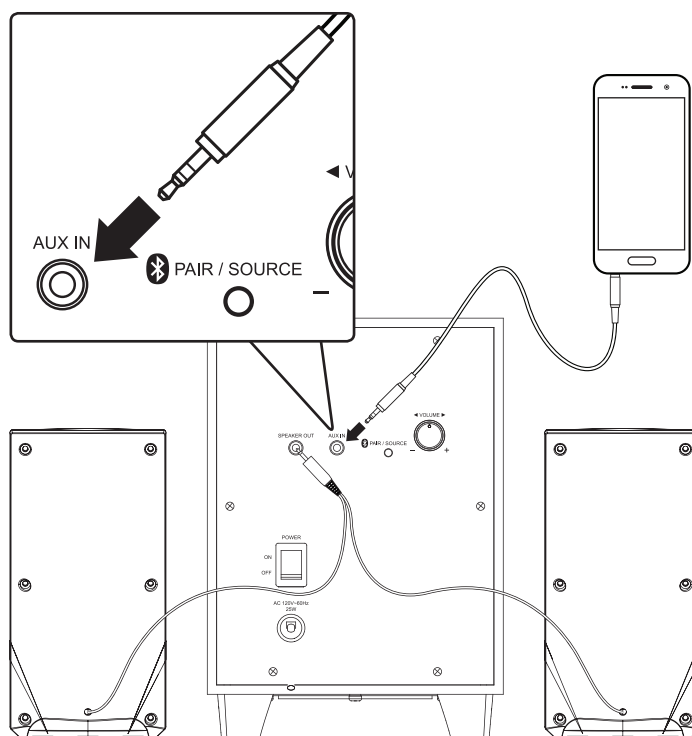
Previously Connected Devices

- The system can remember multiple Bluetooth devices and will always try to re-connect to the last device used.
- To re-connect to a different device, turn off Bluetooth on unwanted devices, then access the Bluetooth settings menu on the device you wish to use and select **IHB18**.

Aux In

Requires a 3.5mm audio cable (included).

1. Power ON the unit and press the **Source button** to switch to Aux In Mode.
2. Connect a 3.5mm audio cable to the **Aux In** on the subwoofer and the **audio output/headphone jack** on a smartphone or other audio source.
3. Use the controls on the connected device to select audio, play, pause, skip, and adjust the volume.



INTERNATIONAL SUPPORT

To download this User's Guide in English, Spanish, or French, or to get answers to frequently asked questions, visit the support section at: www.iLiveElectronics.com

Para descargar este Manual del Usuario en inglés, español y francés, o para obtener respuestas a preguntas frecuentes, visite la sección de apoyo en: www.iLiveElectronics.com

Pour télécharger ce guide de l'utilisateur en anglais, espagnol ou français, ou pour obtenir des réponses à des questions fréquemment posées, consultez la rubrique d'assistance sur: www.iLiveElectronics.com

For Warranty Information and the most up-to-date version of this User's Guide, go to www.iLiveElectronics.com

Customer Service: 1-888-999-4215 | **Email Support:** prodinfo@dpiinc.com | **Email Parts:** partsinfo@dpiinc.com

Copyright © 2018 Digital Products International (DPI, Inc.) All other trademarks appearing herein are the property of their respective owners. Specifications are subject to change without notice.

