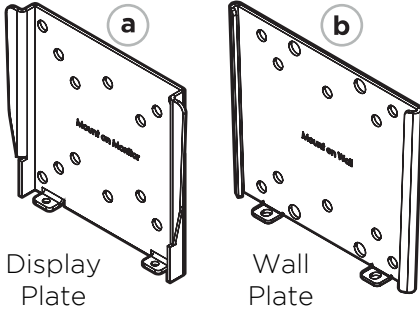


# Installation Instructions

## TH-1026-VF

### Flat Screen Wall Mount | Fixed

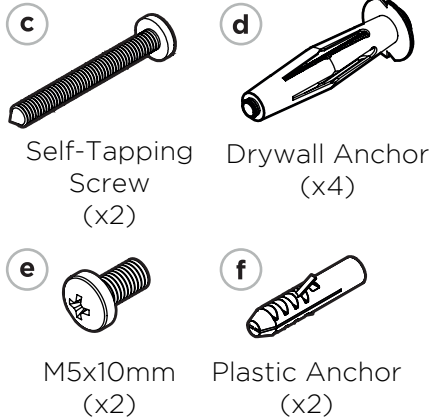
#### Component Checklist



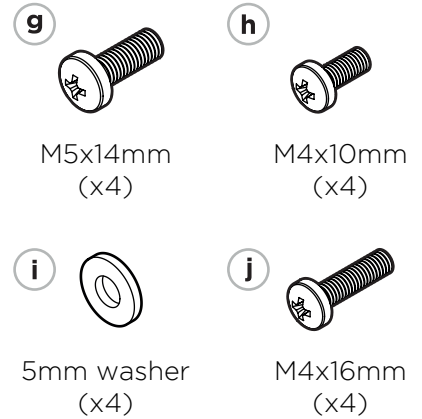
#### Tools Required:

- Power Drill
- Phillips Head screwdriver
- 8mm ( $\frac{5}{16}$ ) masonry drill bit
- 10mm ( $\frac{3}{8}$ ) drill bit
- 4mm ( $\frac{3}{16}$ ) drill bit
- Spirit Level

#### Hardware



#### Display Mounting Screws



#### IMPORTANT INFORMATION

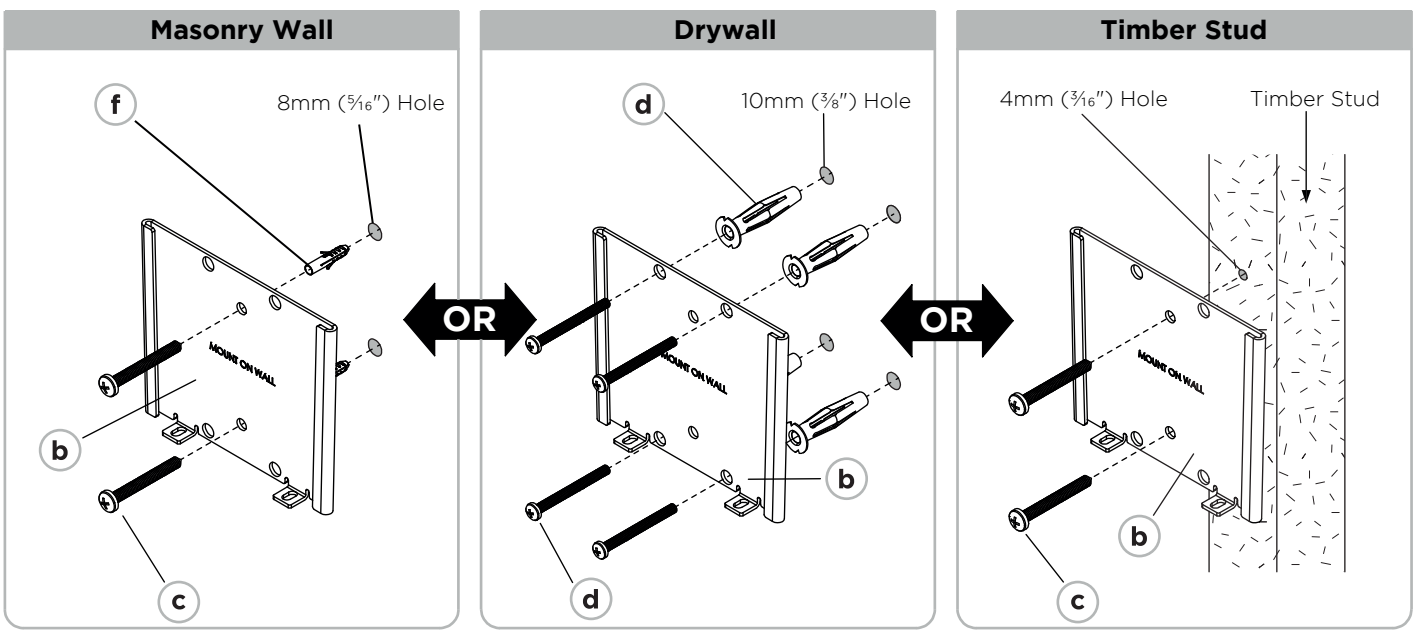
- ! **IMPORTANT - Install TH-1026-VF as per Installation Instructions.**
- ! This product supports a maximum load of 30kg (66lbs). Maximum supported screen size is 27".
- ! This product only supports VESA compliant displays with 75mmx75mm (3"x3") and 100mmx100mm (4"x4") mounting hole patterns. The product can be mounted on any device with these hole patterns, but please check device manufacturer's specification to ensure safety.
- ! The manufacturer does not accept responsibility for incorrect installation.

#### Step 1. Check Components

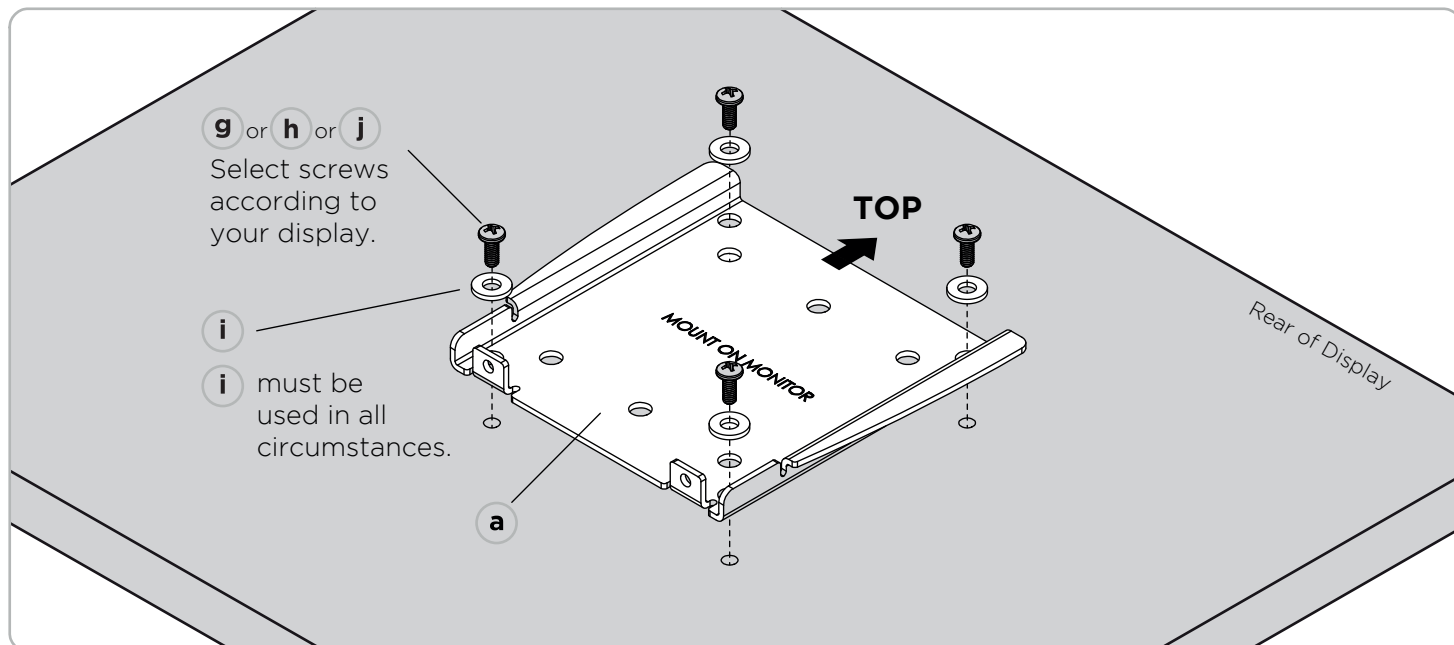
Check you have received all parts against the Component Checklist and Hardware shown above.

#### Step 2. Mounting the Wall Plate

**Tip: Use a spirit level to ensure wall plate is horizontal**

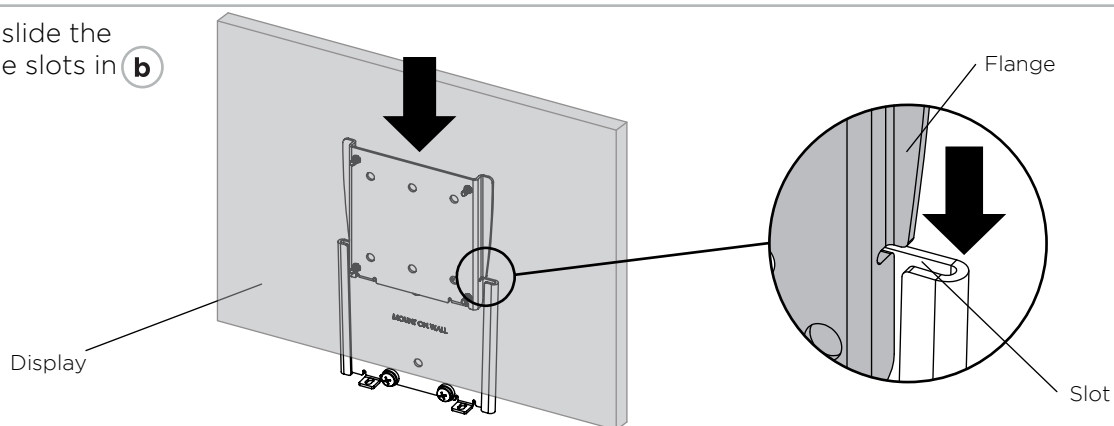


### Step 3. Mounting the Display Plate



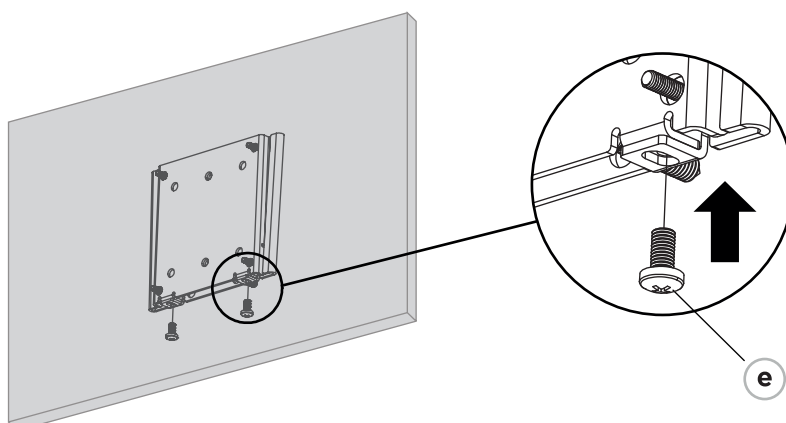
### Step 4. Install Display to Wall Plate

Lift the Display, and slide the flanges on **a** into the slots in **b**



### Step 5. Fasten Plates

Use 2 x part **e** to lock parts **a** and **b** together.



### Installation Complete