



*Seamless Comfort, Spacious Seating!*



*Featuring Auto-Locking Technology*





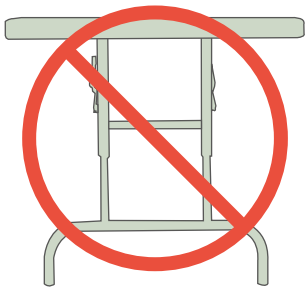


# COMFORT MAX FOLD-IN-HALF TABLE SHAPES

## ROUND



## RECTANGLE



**NO WISHBONE LEGS  
FOR ZERO OBSTRUCTION**  
-Extra Seating Capacity-

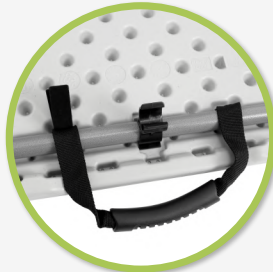


## Shared Features

*Instant Setup: No assembly required!*



**Safety Gravity Locks  
Ensure Table Legs are  
Secure During Use**



**Built-In Carry Handle**



**Durable Polyethylene  
Tabletop with  
Beveled Edges**



**Stain Resistant  
and Easy to Clean**



**Innovative AUTO-LOCKING  
Technology for Safe Setup**



**Constructed with  
Industrial Strength Steel**



**Lightweight  
Design**

*Quick Setup, Versatile Utility: Unfold, Use, and Store Easily!*

**Unfold**



**Enjoy**



**Store**





# CMFIH Series | Folding Tables

## COMFORT MAX FOLD-IN-HALF TABLES

### RECTANGLE

*The Ultimate Space-Saving  
Table Innovation!*



**Easy Transportation & Storage**



**Compatible  
with DOLLY**



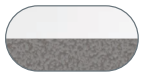
Stores and Transports  
Up To 7 CMFIH-3096 Units

**DYMU**



evenly distributed

**Color**



Speckled Grey Top  
Grey Frame

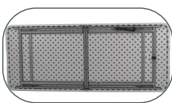


can withstand  
heat up to  
**212°**

### Rectangle Tables Features



1.75" Thick  
Industrial Grade Blow  
Molded Tabletop

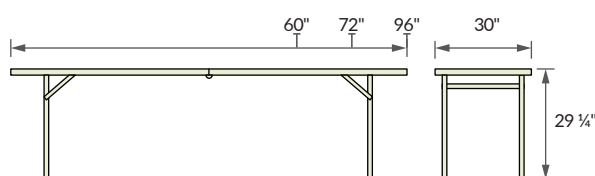


Powder-Coated  
18-Gauge  
Framing System



18-Gauge Legs  
with Non-Slip Glides

### Table Sizes Length Options



**CMFIH3060**

30"W x 60"L x 29 1/4"H

**CMFIH3072**

30"W x 72"L x 29 1/4"H

**CMFIH3096**

30"W x 96"L x 29 1/4"H

# CMFIH Series | Folding Tables

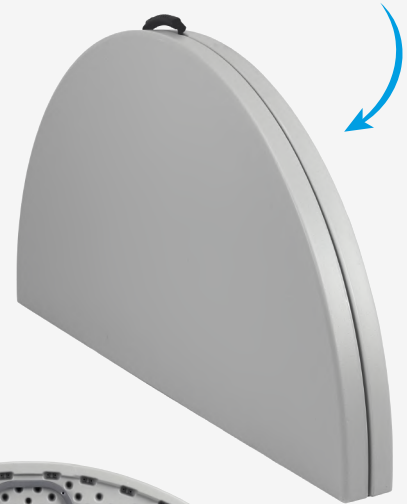
## COMFORT MAX FOLD-IN-HALF TABLES

**ROUND**

*Transform Any Space, Anytime:  
Round, Foldable, and Ready  
to Impress!*

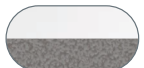


**Easy Transportation & Storage**



evenly distributed

**Color**



Speckled Grey Top  
Grey Frame



### Round Tables Features



2" Thick  
Industrial Grade Blow  
Molded Tabletop

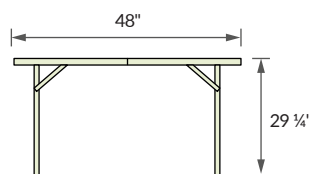


Powder-Coated  
19-Gauge  
Framing System

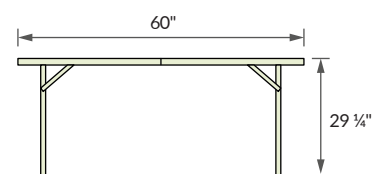


18-Gauge Legs  
with Non-Slip Glides

### Table Sizes Round Options



**CMFIH48R**



**CMFIH60R**