



ROCCAT™
ALUTIC

**DOUBLE-SIDED
GAMING MOUSEPAD**

CHOOSE YOUR DESIGN + SURFACE
DOUBLE-SIDED

2 DISTINCT MATERIALS FOR
SPEED + CONTROL

STABILIZED, ANTI-WARP
ALUMINUM CORE

COMFORTABLE, UNRESTRICTIVE
GEL WRIST REST



**DOUBLE
SIDED**



**ALUMINUM
CORE**



**WARP
PROTECTION**



JOIN US ON
FACEBOOK.COM/ROCCAT

WWW.ROCCAT.ORG



DOUBLE-SIDED
GAMING MOUSEPAD

CHOOSE YOUR DESIGN + SURFACE
DOUBLE-SIDED

2 DISTINCT MATERIALS FOR
SPEED + CONTROL

STABILIZED, ANTI-WARP
ALUMINUM CORE

COMFORTABLE, UNRESTRICTIVE
GEL WRIST REST

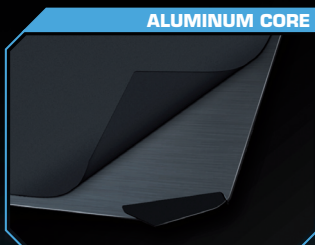


INFORMATION

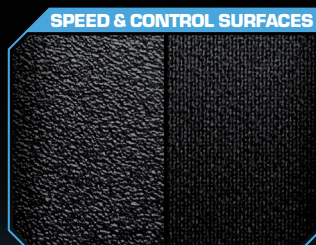
The **ROCCAT™ AlumiC** is a high-quality, double-sided gaming mousepad featuring a black, anodized aluminum core. Thanks to both surfaces having different textures, the mousepad adapts to suit the way you game. The durable **ROCCAT™ AlumiC** can either be used as a high-sense pad (**SPEED**) or as a low-sense pad (**CONTROL**) just by flipping it over – which also changes its look. The elastic gel wrist rest ensures maximum gaming comfort.



The extra-large, custom-fit rubber feet provide ultra-strong grip on any desk. Even in heavy combat, there is no risk of it sliding out of place. The ultimate in gaming control.



The anodized aluminum core offers incredible warp-protection and guarantees maximum stability and durability – making it ideal for use either on the sofa or while on the move.



Two very different surface textures meet the highest demands of both low and high-sense gamers, guaranteeing outstanding tracking and a first-rate gaming experience.

FEATURES

- Optimized for high and low-sense gamers
- Warp-protecting anodized aluminum core
- Gel wrist rest for comfortable gaming sessions
- Ultra-strong grip on any desk
- High quality materials
- Easy-to-clean surfaces to reduce mouse friction
- 331 x 272mm in size, 3mm thick

TESTED WITH

- | | |
|---------------------------|-------------------------|
| - ROCCAT™ Kone | - Logitech® MX/G-Series |
| - ROCCAT™ Kone[+] | - Speedlink® Kudos |
| - ROCCAT™ Kova | - Steel Series™ Ikari |
| - ROCCAT™ Kova[+] | - Steel Series™ Xai |
| - ROCCAT™ Pyra | - Steel Series™ Kinzu |
| - Microsoft® Sidewinder | - Razer Lachesis™ |
| - Microsoft® MS 3.0 / 1.1 | - Razer Naga™ |