

# Nano Dongle

Bluetooth 4.0 LE + EDR



VP6495

The logo for SMK Link, featuring a stylized orange and blue graphic above the text "SMK Link".

## Regulatory Compliance

This device complies with Part 15 of the FCC Rules. Operation is subject to the following two conditions:

- (1) This device may not cause harmful interference, and
- (2) This device must accept any interference received, including interference that may cause undesired operation.

## FCC Certification

This equipment has been tested and found to comply with the limits for a Class B digital device, pursuant to Part 15 of the FCC rules. These limits are designed to provide reasonable protection against harmful interference when the equipment is operated in a residential installation. This equipment generates, uses and can radiate radio frequency energy and, if not installed and used in accordance with the instructions, may cause harmful interference to radio communications. However, there is no guarantee that interference will not occur in a particular installation. If this equipment does cause harmful interference to radio or television reception, which can be determined by turning the equipment off and on, the user is encouraged to try to correct the interference by one or more of the following measures:

- Reorient or relocate the receiving antenna.
- Increase the separation between the equipment and receiver.
- Consult the dealer or an experienced radio/TV technician for help.

Notice: Any changes or modifications not expressly approved by the party responsible for compliance could void the user's authority to operate the equipment. Extension cables are not recommended, if used, they must be shielded in order to comply with the emission limits.

## IC Certification

The term "IC" before the certification/registration number only signifies that the Industry Canada technical specifications were met.

## Declaration of Conformity

Hereby, SMK-LINK Electronics Corporation, declares that this product is in compliance with the essential requirements and other relevant provisions of Directive 1999/5/EC.

All trademarks and registered trademarks mentioned in this document are the property of their respective owners.

Features and specifications are subject to change without notice.

©2012 SMK-LINK Electronics, Inc.

# System Requirements

## Hardware:

- One available USB port
- Access to CD burner (built-in or external)
- 700MB of storage space available for Bluetooth software

## Operating System:

- Windows XP, Windows Vista, Windows 7, Windows 8

## Package Contents

- Bluetooth v4.0 Nano Dongle
- Bluetooth Software CD-ROM
- User's Manual

# Product Overview

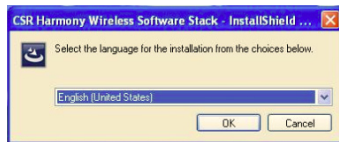
This Bluetooth v4.0 Nano Dongle converts a host computer to a Bluetooth Smart Ready system. When connected with a Bluetooth Smart device, the device can fully benefit from the new features of the Bluetooth Smart Ready system:

- 2.5 times longer transmission range compared to the traditional Bluetooth Class 2 range for up to 80 feet / 25 meters
- Low energy mode enables low power consumption to prolong battery life of Bluetooth v4.0 Smart Devices
- Enhanced data rate for up to 3 times faster data transmission speed

## Installing Bluetooth Software

- Insert the Bluetooth v4.0 Nano Dongle into the available USB port on your computer.
- Insert the CD-ROM into your computer's CD burner.

- Run setup.exe.
- Start the installation process; select a language, click **[OK]**.



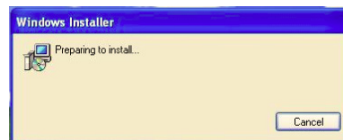
- Install Microsoft .NET Framework; click **[Install]**.



- Install CSR Harmony Software Stack; click **[Next]**.



- Follow the self-explanatory instructions.



- Continue the installation; click **[Next]**.



- Select “I accept the terms in the license agreement”; click **[Next]**.

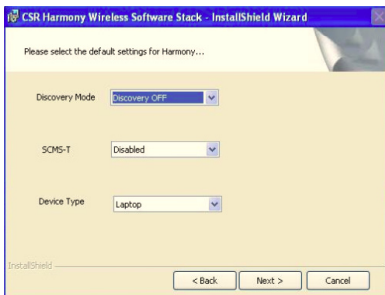


- It's recommended to keep the default installation path and save the program in the default folder; click **[Next]**.

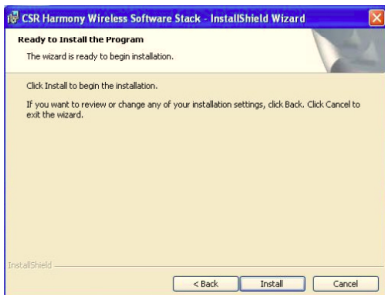


- The Wizard prompts you to set up the Bluetooth stack; the recommended setting is:
  - Discovery Mode: select “Discovery On” to allow other Bluetooth hosts to find this computer.
  - SCMS-T: select “Enabled” to support music in SCMS-T format.
  - Device Type: select “Desktop Computer” or “Laptop Computer”.

- When done, click **[Next]**.



- You are ready to install the program; click **[Install]**.



- Installation takes a few minutes; do not close the window until it's done.



## Connecting Bluetooth Devices to Your Bluetooth v4.0 PC

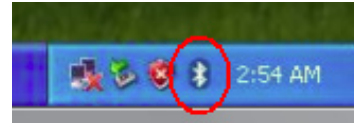
- You are now ready to connect your Bluetooth devices with your Bluetooth-enabled computer. Before you can use a Bluetooth device for the first time you must connect your device through a standard procedure of discovery and pairing.

- Please note that you have a choice of using your Windows OS native Bluetooth software stack or the included software driver by CSR that comes with your Bluetooth v4.0 Nano Dongle to support your Bluetooth devices. To fully benefit from the Bluetooth v4.0 LE (Low Energy) and EDR (Enhanced Data Rate) we recommend you use the included software driver by CSR.

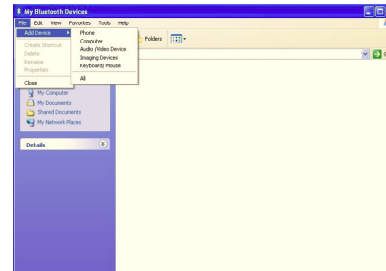
- Please also note that this product upgrades your computer to a Bluetooth Smart Ready host system, its full benefits are available when connected to a Bluetooth Smart device that is also designed with Bluetooth 4.0. Your Smart Ready host system is backward compatible with all traditional and previous versions of Bluetooth devices; however, the devices will function as what they are without the full benefits of the Bluetooth v4.0 LE and EDR.

- Please review the documentation that comes with your Bluetooth device, or consult with your device vendor's Technical Support for any specifics regarding your Bluetooth device.

- Run CSR Harmony Bluetooth Stack by double clicking the Bluetooth icon on your system tray or desktop.



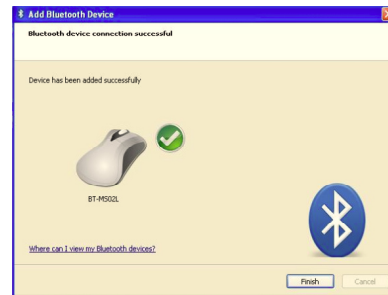
- Make sure your Bluetooth device is in pairing mode. Press “File” pull down menu, select “Add Device”, and then select from the pull down menu “Phone”, “Computer”, “Audio/Video Device”, “Imaging Devices”, “Keyboard/Mouse”, or “All” if it’s not listed.



- When your Bluetooth device is found, double click the device name to make the connection.

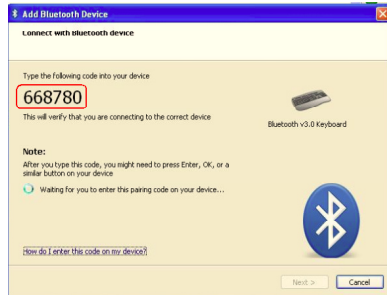


- When device is successfully connected to your host system, a green check mark is shown next to the device. Click **[Finish]** to exit and the device should work now.

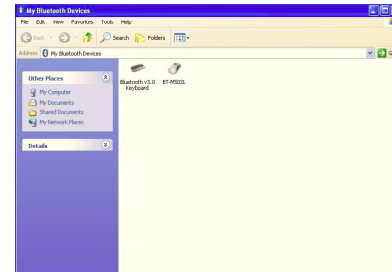




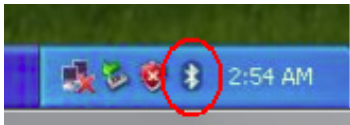
- When connecting a keyboard, the Add Bluetooth Device Wizard will ask for a pairing code. Enter the code on the Bluetooth keyboard you are pairing (not the built-in notebook computer keyboard) and press “Enter” on the keyboard to send the code.



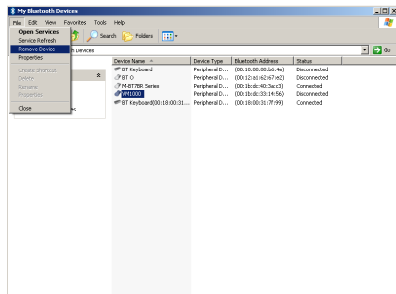
- My Bluetooth Devices page displays the status of your Bluetooth devices.



- To check the Bluetooth device status, click on the Bluetooth icon on your system tray.



- To remove devices from your Bluetooth connection, select “File” and from the pull down menu select “Remove Device”. Select the device from the list to remove it.



## Operating Tips & Troubleshoot

- Before connecting a new Bluetooth device, make sure the device is turned on, has Bluetooth enabled and is discoverable.
- When connecting a new Bluetooth device, you may be unable to find your device during pairing for a number of reasons, these include:
  - The device is turned off.
  - The device’s battery is low or flat.
  - The device is not in range.
  - The device doesn’t have Bluetooth enabled.
  - The device is not in discoverable mode.
- Please consult with your device user’s manual for instructions on how to make connections to a Bluetooth host system.

# Warranty

SMK-LINK ELECTRONICS CORPORATION (SMK-LINK) warrants to the original end-user purchaser of the Product (“you”) that the Product, excluding batteries, will be free from defects in materials or workmanship under normal use and service for one-year from date of purchase. Dated invoice or sales receipt is necessary to accompany the Product returned for warranty service consideration. Any Product repaired or replaced under the terms of the warranty is covered for the remainder of the original warranty period or ninety (90) days from the date of service or return shipping, whichever is longer. If the Product becomes defective in materials or workmanship during the warranty period, SMK-LINK will, at its option, either repair or replace it with a more current or upgraded model if the originally purchased model is not available. This warranty does not cover products which have been subjected to misuse, accident, physical damage, improper installation, abnormal operation or handling, neglect, inundation or fire, or when product regulatory label has been removed, altered or rendered illegible; nor does it cover accessory and consumable items. In no case shall SMK-LINK be liable for any indirect special, incidental, or consequential damages based upon breach of warranty, breach of contract, negligence, strict tort or any other legal theory. Such damages include, but are not limited to, loss of profits, loss of savings or revenues, inability to use the product or any associated equipment, cost of capital, cost of any substitute equipment, facilities or services, claims by third parties other than you, and injury to property. SMK-LINK’s total liability for damages for any cause related to, or arising out of, the use or inability to use the product, shall not exceed the original price paid for the product even if SMK-LINK has been informed of such possibility. If your Product requires warranty service, you must first contact SMK-LINK Product Support to receive an RMA

Number. The contact information can be found on SMK-LINK website:

<http://www.smklink.com/support/contactsupport.html>.

This warranty does not affect your statutory right and you may also have other rights which vary from state to state. Unless modified in writing, signed by both you and SMK-LINK, this warranty is understood to be the complete and exclusive agreement between the parties, superseding all prior agreements, oral or written, and all other communications between the parties relating to the subject matter of this warranty.

# Product Support

SMK-Link Electronics Corporation

3601-B Calle Tecate, Camarillo, CA 93012

TEL: (888) 696-3500 FAX: (805) 987-6665

[www.smklink.com](http://www.smklink.com)

