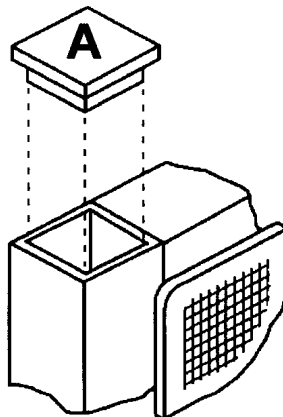


Verse Wall Connector Assembly Instructions

For PWB-1

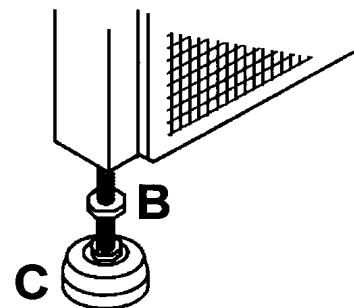
Step 1

Remove plastic caps (A) from tops of panels involved in by prying out with screwdriver. Place plastic cap with threaded hole (D) into top corner of panel. Find top wall bracket (E) and install on panel as shown using screw provided (F). Bracket lays over the top bar of frame.



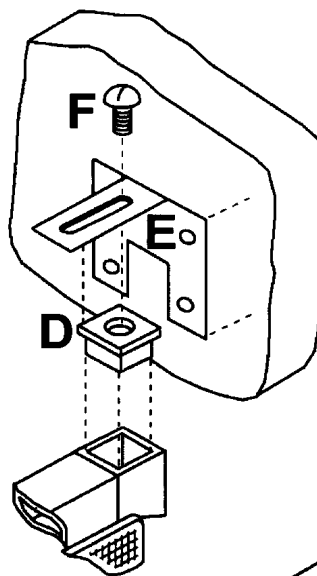
Step 2

Make sure glides (C) are out about 1" from bottom of panel (if glides are not in panels, install them at this time). Turn flange nut (B) on glide stem out so that there is at least 1/4" clearance between bottom of panel frame and flange nut. Find bottom wall bracket (G) and insert as shown between panel frame and flange nut. Tighten flange nut to secure bracket in place.



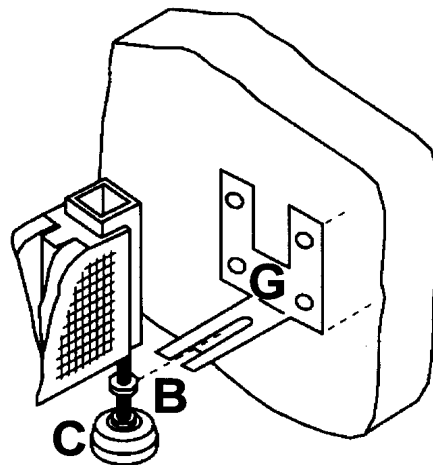
Step 3

With help from another person, stand panel in position against wall. Place carpenters level against panel frame and when panel is perfectly vertical, mark where holes in both top and bottom brackets line up on wall.



Step 4

Remove panel from wall. Type of fastener will depend upon type of wall being attached to. Maxon Furniture Inc. does not provide fasteners for this purpose. Using the proper fasteners, secure panel to wall.



Step 5

Panel distance from wall can be adjusted by loosening screw on top and nut on bottom and positioning panel where desired. Retighten screw and nut.



Verse Wall Connector

CONNECTOR

- PWB-1 Wall Bracket

COLOR

- BLACK
- TAUPE
- GREY
- CHARCOAL



181-30015
Aug, 2002

INSPECTOR