

Post Parts

A1 Divider Post 1Pc	A2 Cover Strip 3Pcs	A3 Threaded Rod 1Pc	A4 Top Cap 1Pc	A5 Post Mounting Plate 1Pc	A6 Washer 1Pc	A7 Locking Nut 1Pc	A8 Screw #4 x 1- 3/8" 4Pcs	A9 Spanner 1Pc	A10 Location Label 1Pc
---------------------------	---------------------------	---------------------------	----------------------	----------------------------------	---------------------	--------------------------	----------------------------------	----------------------	------------------------------

Panel Parts

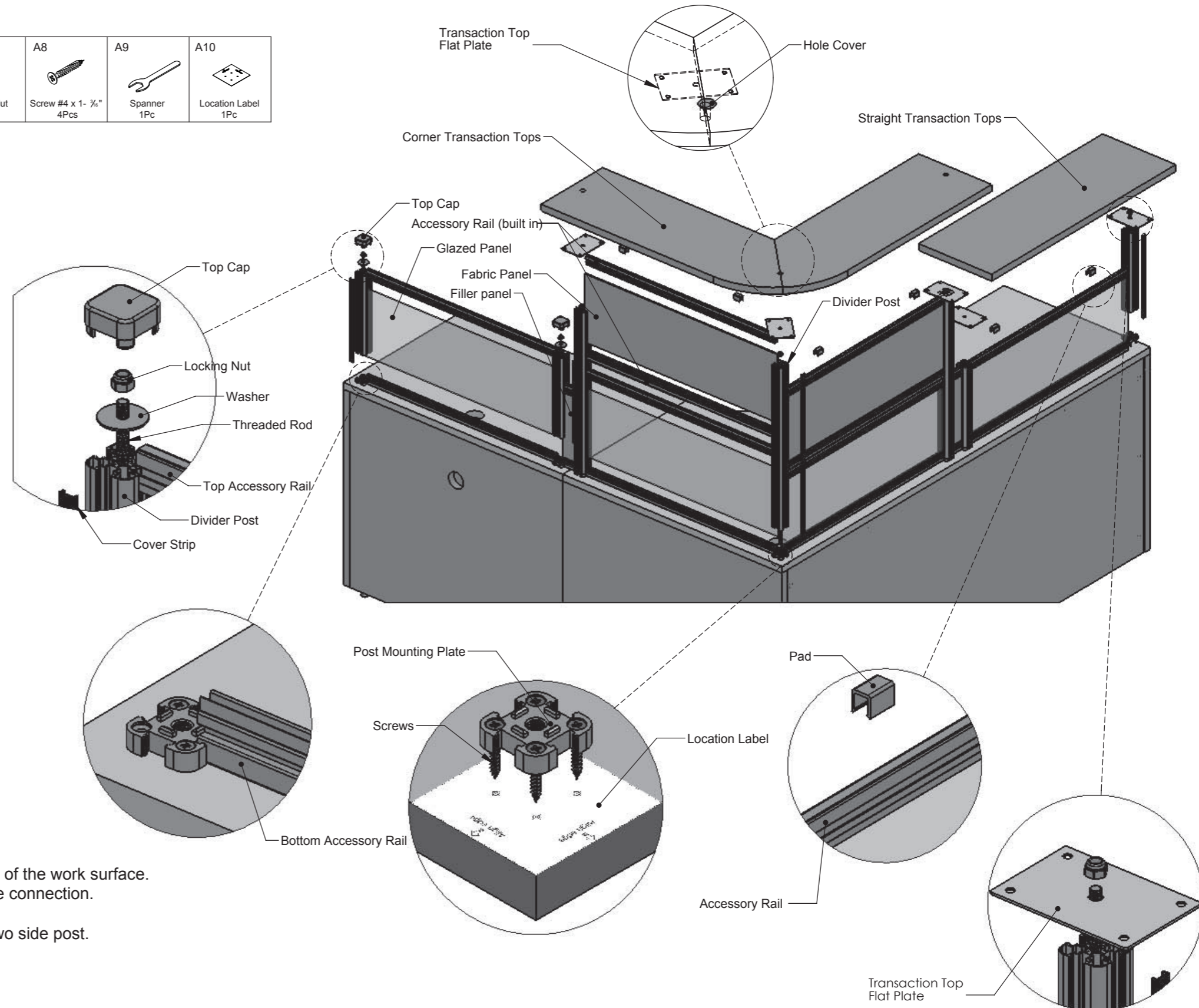
B1 Main Panel 1Pc	B2 Bottom Accessory Rail for Main Panel 1Pc	B3 Top Accessory Rail for Main Panel 1Pc	B4 Filler Panel 1Pc	B5 Bottom Accessory Rail for Filler Panel 1Pc	B6 Top Accessory Rail for Filler Panel 1Pc
-------------------------	---	--	---------------------------	---	--

Straight Transaction Tops Parts

C1 Straight Transaction Tops 1Pc	C2 Transaction Top Flat Plate 2Pcs	C3 Screw #4 x 3/8" 8Pcs	C4 Pad 2Pcs
--	--	-------------------------------	-------------------

Corner Transaction Tops Parts

D1 Corner Transaction Tops 1Pc	D2 Transaction Top Flat Plate 2Pcs	D3 Screw #4 x 3/8" 8Pcs	D4 Hole Cover 2Pcs	D5 Pad 2Pcs
--------------------------------------	--	-------------------------------	--------------------------	-------------------



IMPORTANT NOTE:

- Suggest to use the tool Drill to attach the "post mounting plate" to the top of the work surface.
- Please ensure the "Post Mounting Plate" is straight and aligned to ensure connection.
- Divider Post is bolted to the Mounting Plate.
- Align accessory rail is straight with leveling tool when inserted into the two side post.
- Top Cap is attached to the top of the Divider Post.
- Hole Cover is attached to the top of the Corner Transaction Tops.