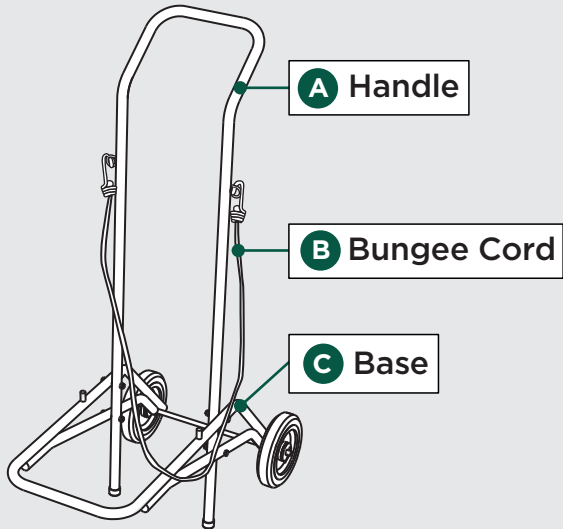


ASSEMBLY INSTRUCTIONS DY-9000 SERIES | CHAIR DOLLY

DY-9000 CHAIR DOLLY COMPONENTS



INCLUDED HARDWARE

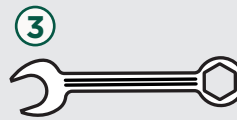


Bolts x4

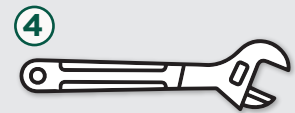


Lock Nuts x4

RECOMMENDED TOOLS

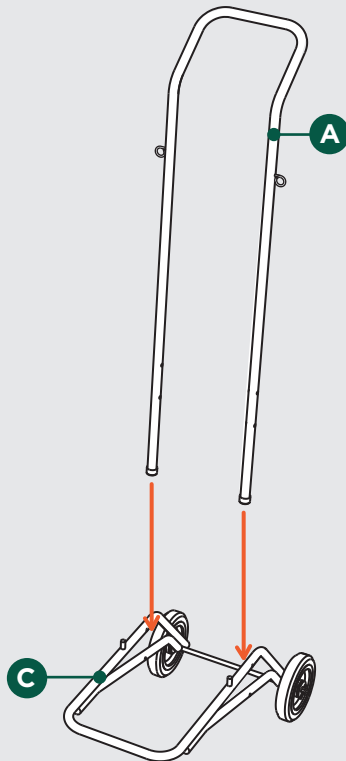


Ratchet

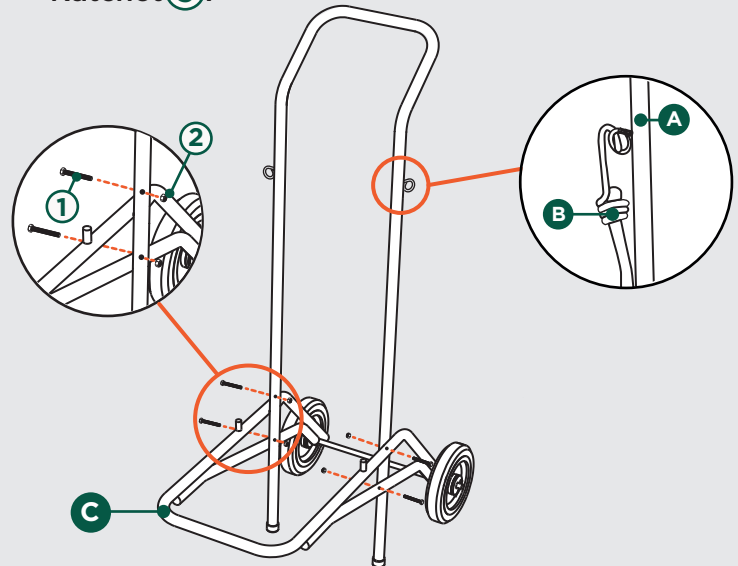


Adjustable Wrench

1 Place Handle **A** into the Base **C**.



2 Align the holes on the Handle **A** to the holes on the Base **C** and insert the Bolts **1** through. Put a Nut **2** on each Bolt and tighten with a Ratchet **3**.



USING THE DY-9000: After loading chairs onto Dolly, be sure to secure them with attached Bungee Cord **B**.



Double check all Bolts to be tightened securely before use. Check all Bolts periodically. Failure to completely tighten the Bolts may result in tipping and possible injury!

Congratulations, your CHAIR DOLLY is now assembled and ready to be used!

Dear Customer, Thank you for your purchase. Although extreme care goes into manufacturing & packaging of this product, mistakes are possible. If you encounter any missing parts or difficulty in assembly, please contact our customer service Toll Free at 1-800-261-4112 or info@nationalpublicseating.com for courteous & immediate resolution to your problem.