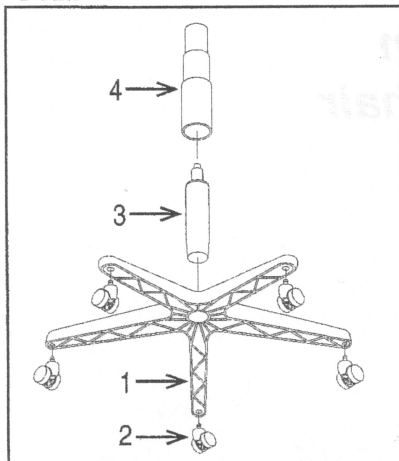
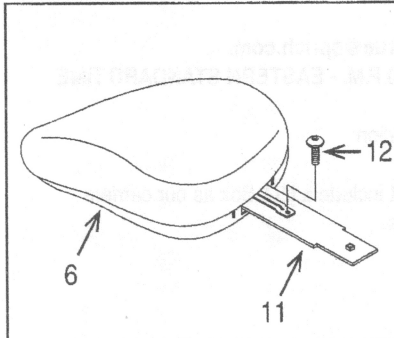


LORELL ASSEMBLY INSTRUCTIONS

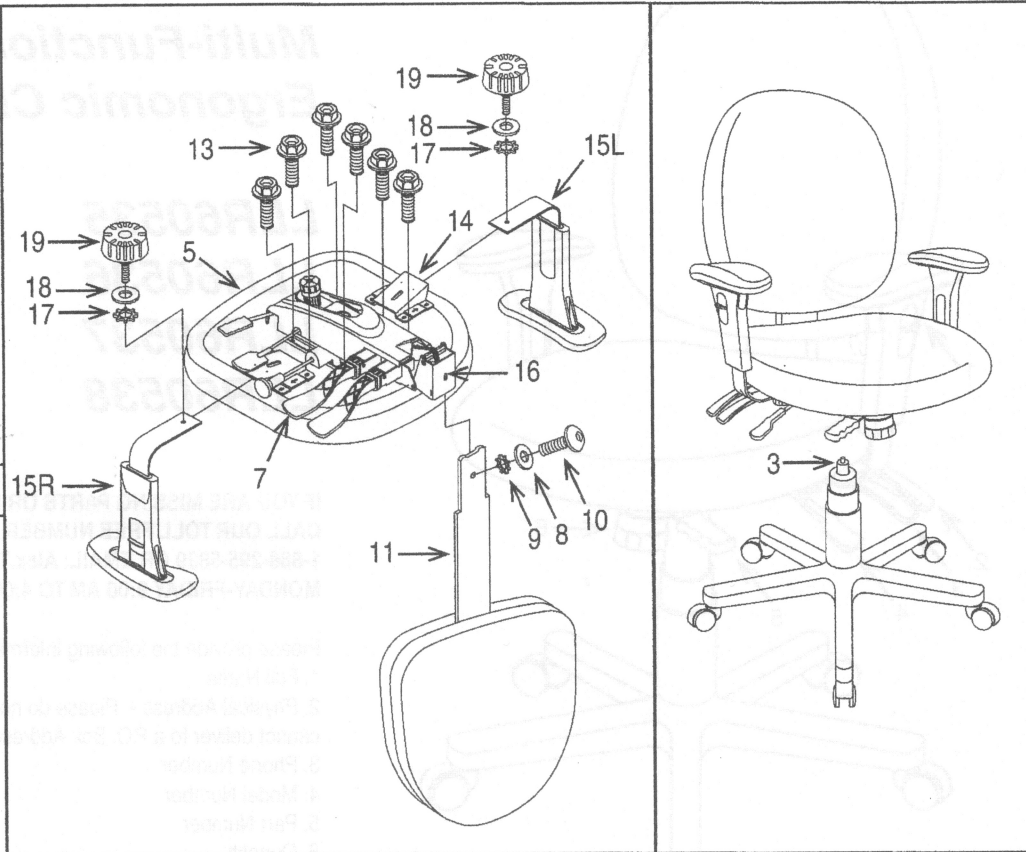
STEP 1



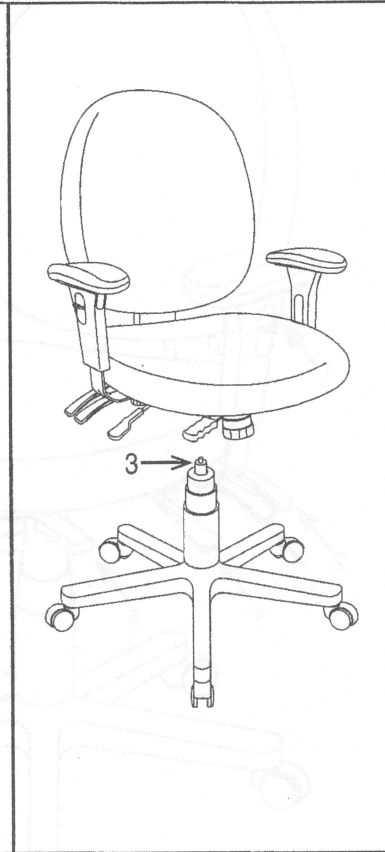
STEP 2



STEPS 3 & 4



STEP 5



Remove all parts from carton, separate by part numbers indicated on parts list, and verify part quantities.

STEP 1 Insert five Casters (2) into Base (1), push hard until you feel or hear the Caster (2) snap into place. Insert Pneumatic Cylinder (3) into Base (1). Slip Bellows (4) over Pneumatic Cylinder (3).

STEP 2 Attach Back Cushion Post (11) to Back Cushion (6) using Back Support Screw (12).

FULLY TIGHTEN SCREW USING ALLEN WRENCH (20).

STEP 3 Attach Arms (15L & 15R) to Arm Brackets (14) using one Arm Knob (19), one Flat Washer (18) and one Star Washer (17) for each arm. **TIGHTEN BOTH ARM KNOBS (19) COMPLETELY.** Attach Mechanism (7) to Seat Cushion (5) using six Mechanism Screws (13). **FULLY TIGHTEN SCREW USING ALLEN WRENCH (20).**

STEP 4 Insert Back Cushion Post (11) into Back Support (16) and secure using Back Cushion Bolt (10), Flat Washer (8) and Star Washer (9). **FULLY TIGHTEN BACK CUSHION BOLT (10) USING ALLEN WRENCH (20).**

STEP 5 Place the assembled seat on Pneumatic Cylinder (3) and apply downward pressure.

ATTENTION: MAKE SURE ALL SCREWS ARE FULLY TIGHTENED BEFORE USING CHAIR.

PART	QTY
1. Base	1
2. Casters	5
3. Pneumatic Cylinder	1
4. Bellows	1
5. Seat Cushion	1
6. Back Cushion	1
7. Mechanism	1
8. Flat Washer	1
9. Star Washer	1
10. Back Cushion Bolt	1
11. Back Cushion Post	1
12. Back Support Screw	1
13. Mechanism Screw	6
14. Arm Bracket (pre-installed)	2
15. Arms Left (15L) Right (15R)	2
16. Back Support (Pre-Installed)	1
17. Star Washer	2
18. Flat Washer	2
19. Arm Knob	2
20. Allen Wrench (M5 & M6 Not Shown)	2