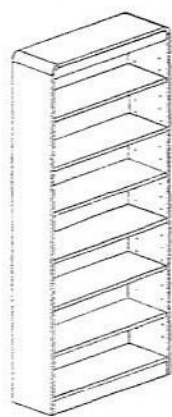
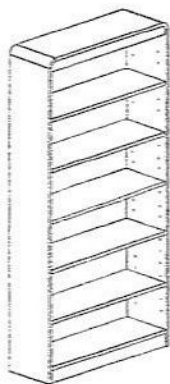


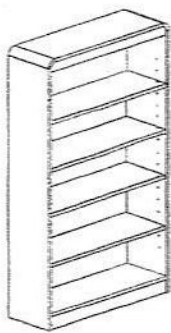
ASSEMBLY INSTRUCTIONS BOOKCASE 3000/4000 RD series



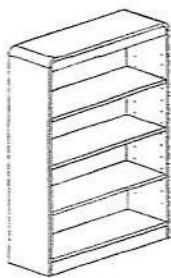
84"



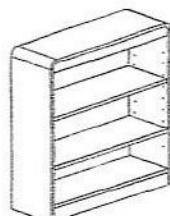
72"



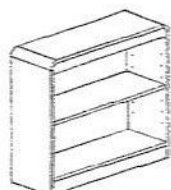
60"



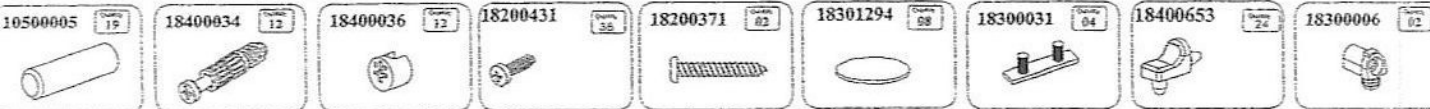
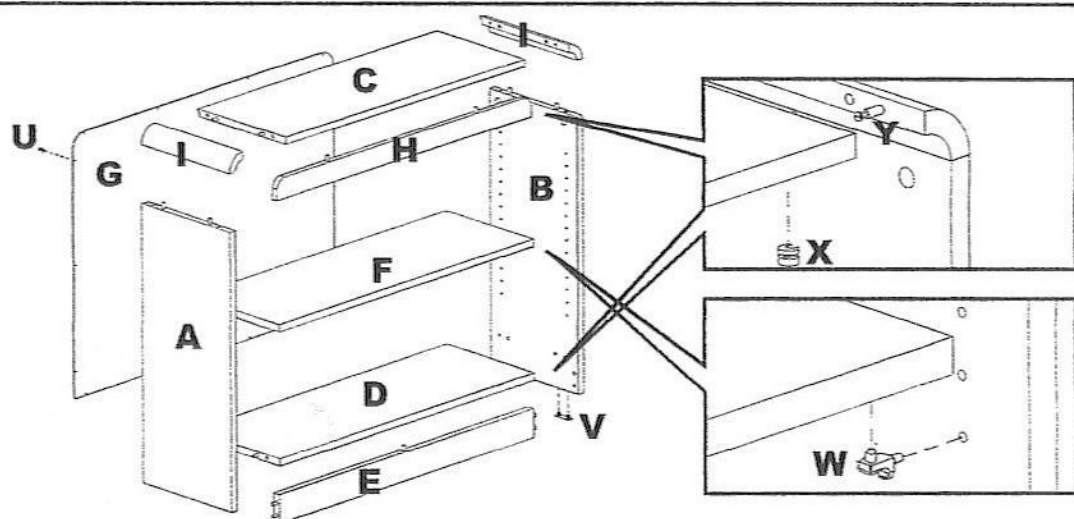
48"



36"



30"



PART LIST

Left Side (A)
Right Side (B)
Top panel (C)
Bottom panel (D)
Bottom rail (E)
Shelf (F)
Back panel (G)
Top rail (H)

Step 1 - Lay sides (A+B) on the floor with holes facing up and screw 8 (eight) connecting bolts (Y).

Step 2 - Attach bottom rail (E) to bottom panel (D).

Step 3 - Attach bottom assembly (D+E) to side (A).

Step 4 - Attach top rail (H) to top panel (C).

Step 5 - Attach top assembly (C+H) to side (A).

Step 6 - Attach other side (B) and lock joints by turning cams (X) with screwdriver clockwise.

Step 7 - Turn assembled bookcase on front edges, insert back panel (G) into routed grooves and fasten it with screws (U).

Step 8 - Insert the plastic feet (V) in the holes on bottom edge of the sides (A+B).

Step 9 - Set bookcase upright, insert shelf pins (W) and place shelf (F) on top of pins. Shelves lock into place to assure stability.

NOW YOUR BOOKCASE IS READY FOR USE.