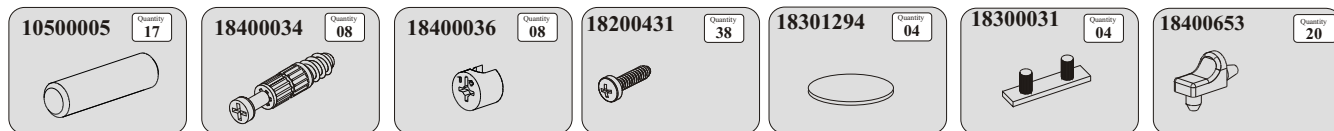
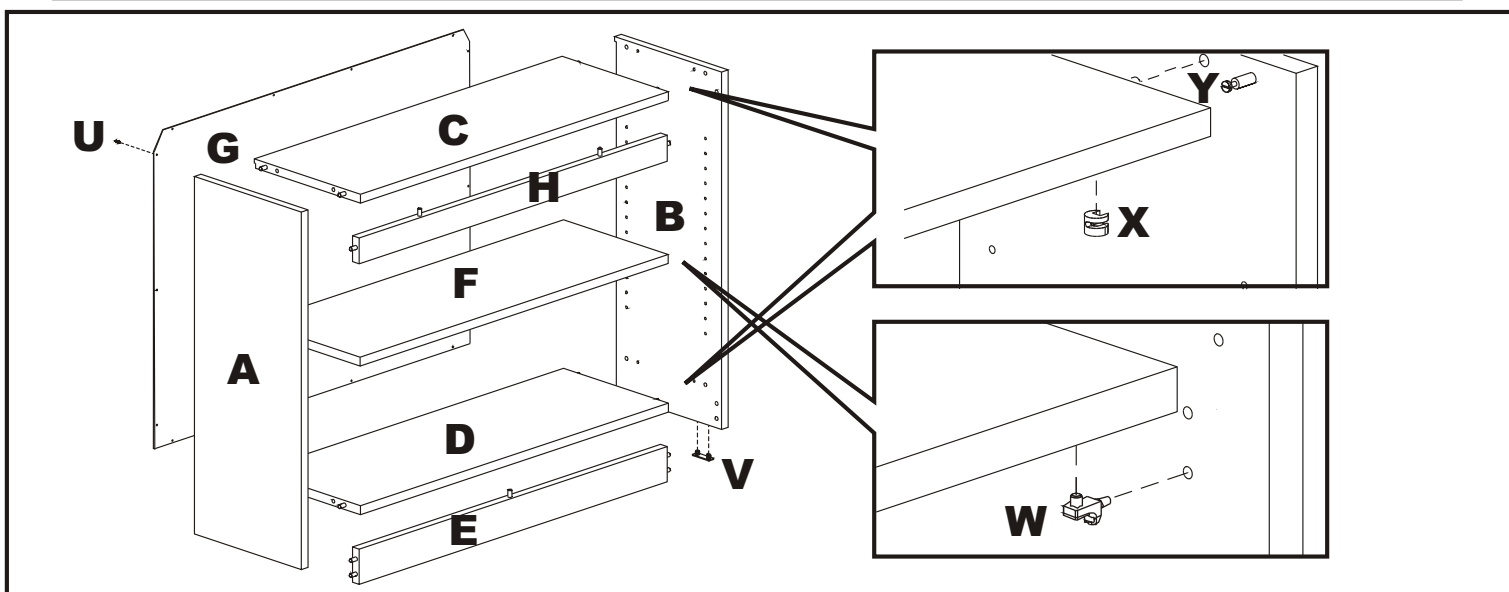
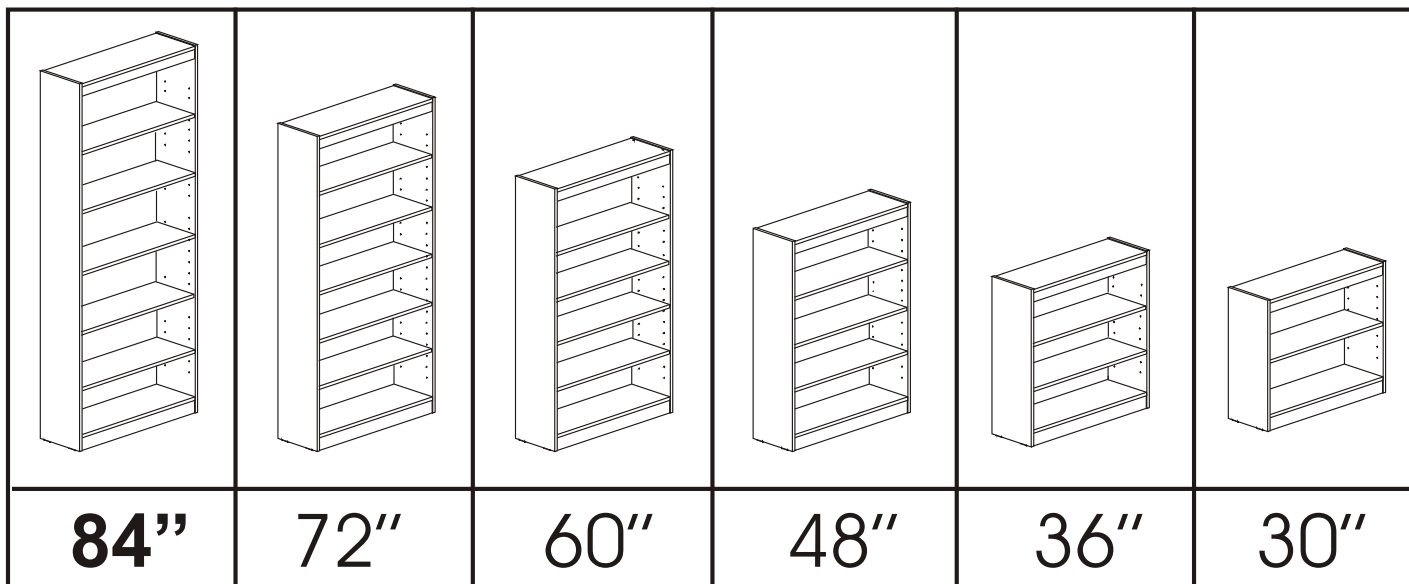


ASSEMBLY INSTRUCTIONS BOOKCASE 4000/6000



PART LIST

Left Side (A)
Right Side (B)
Top panel (C)
Bottom panel (D)
Bottom rail (E)
Shelf (F)
Back panel (G)
Top rail (H)

Step 1 - Lay sides (A+B) on the floor with holes facing up and screw 8 (eight) connectig bolts (Y).

Step 2 - Attach bottom rail (E) to bottom panel (D).

Step 3 - Attach bottom assembly (D+E) to side (A).

Step 4 - Attach top rail (H) to top panel (C).

Step 5 - Attach top assembly (C+H) to side (A).

Step 6 - Attach other side (B) and lock joints by turning cams (X) with screwdriver clockwise.

Step 7 - Turn assembled bookcase on front edges, insert back panel (G) into routed grooves and fasten it with screws (U).

Step 8 - Insert the plastic foot (V) in the holes on bottom edge of the sides (A+B).

Step 9 - Set bookcase upright, insert shelf pins (W) and place shelf (F) on top of pins. Shelves lock into place to assure stability.

NOW YOUR BOOKCASE IS READY FOR USE.