

**STEP 1**

1. Assemble Right Back (D) to Left Back (E) by aligning tabs on Right Back (D) into slotted holes in Left Back (E) as shown and sliding into position until top edges of both backs are in line with one another.
2. Lay Right Back (D) flat on floor.

**STEP 2**

1. Assemble Left Side (B) and Right Side (C) by placing the slotted holes in the edges of Sides (B,C) into the tabs located on the sides on the Backs (D,E) as shown and sliding into position until the top edges of Sides (B,C) are in line with the top edges of Backs(D,E).

**STEP 3**

1. Inner Kickplate (J) has 4 round alignment protrusions. Place these alignment protrusions into the corresponding alignment holes located at the bottom front of Sides (B,C)
2. Insert Bolt and washer (N) as shown. Note : Start all 4 bolts, then tighten.

**STEP 4**

1. Install Bottom Shelf (L) as shown. Note The inside surfaces of Sides (B,C) and Backs(D,E) have flanges that the edges of Bottom Shelf (L) fit into . The edges of Bottom Shelf (L) with 3 notches goes toward Backs (D,E).

**STEP 5**

1. Separate plastic parts (R and Q).
2. Place Outer Kickplate (K) over top edge of Inner Kickplate (J) as shown.
3. Rotate Outer Kickplate (K) into Inner Kickplate (J) until holes located in the bottom of Outer Kickplate (K) snap over lances located inside of the bottom flange of the Inner Kickplate (J).
4. Install 2 Door Guides (Q) into Kickplates (J,K) as shown.
5. Install 2 Lock Guides (R) into Kickplates (J,K) as shown.

**STEP 6**

1. Place back side of Top (A) on back as shown. The top edge of Backs (D,E) goes inside the flanges located on the inside of Top (A). Note: It may be easier to install top after setting unit upright.
2. Rotate Top (A) toward front of case. The top edge of Sides (B,C) goes inside the flanges located on the inside of Top (A)
3. Align holes located near front of Top (A) with holes located near front Sides (B,C) and install Bolt and Washer (N). Note: Install both Bolts (N) before tightening.

**STEP 7**

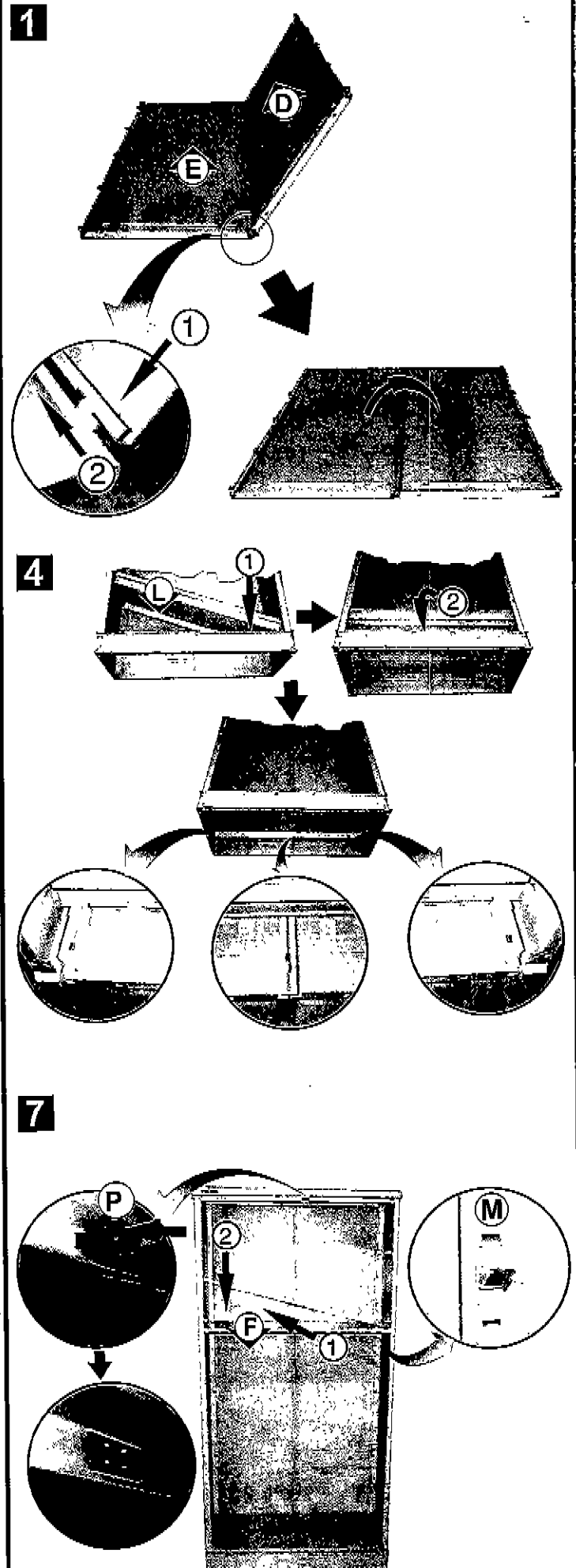
1. Set unit upright.
2. Install Magnetic Catch (P) in to Top (A) as shown.
3. Install Shelf Clips (M) in desired location front and back on each side of unit as shown.
4. Install Shelf (F) as shown.
5. Repeat 2 and 3 for each shelf to be installed.

**STEP 8**

1. Install top of Left Door (G) into hole in plastic door guide located under the front edge of Top (A).
2. Align bottom of Left Door (G) with hole in Plastic Door Guide ( Q) located on top edge of Outer Kickplate (K) and install Hinge Pin (I).
3. Bend door tab as shown to hold Hinge Pin (I) in place.

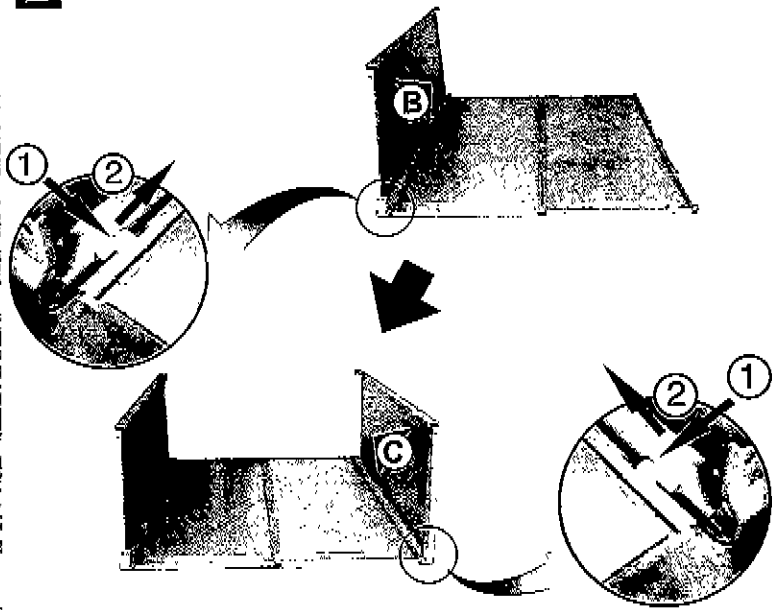
**STEP 9**

1. Install top of Right Door (H) into hole in plastic door guide located under the front edge of Top (A).
2. Align bottom of Right Door (H) with hole in Plastic Door Guide (Q) located on top edge of outer Kickplate (K) and install Hinge Pin (I).
3. Bend door tab as shown to hold Hinge Pin (I) in place.

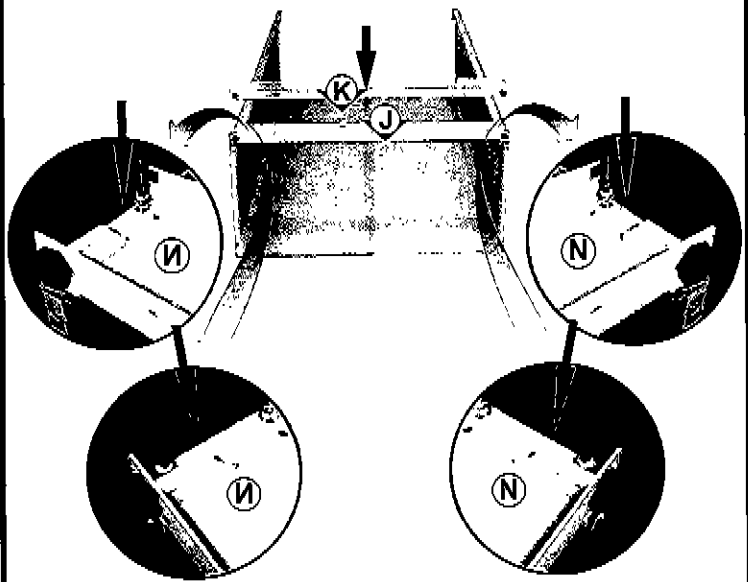


# BODY ASSEMBLY METHOD

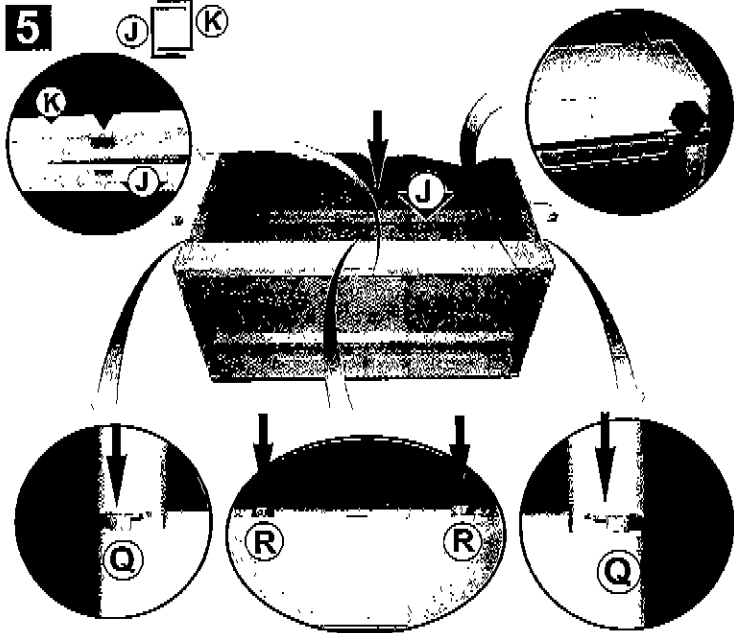
2



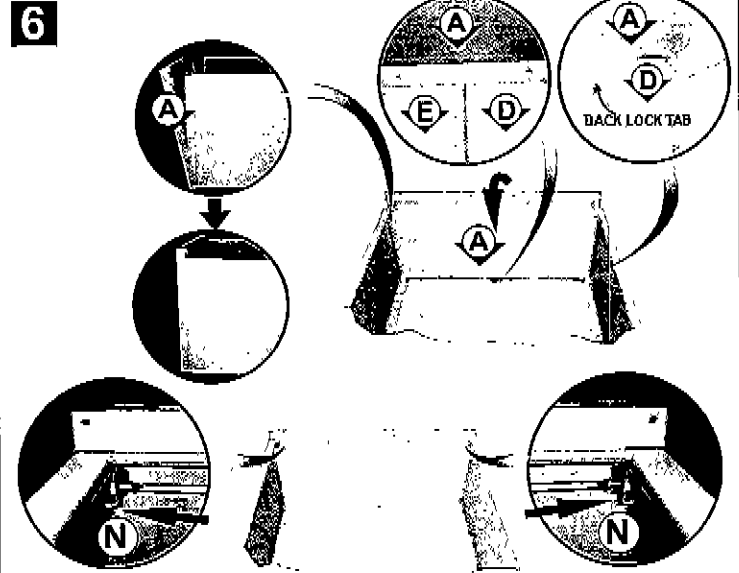
3



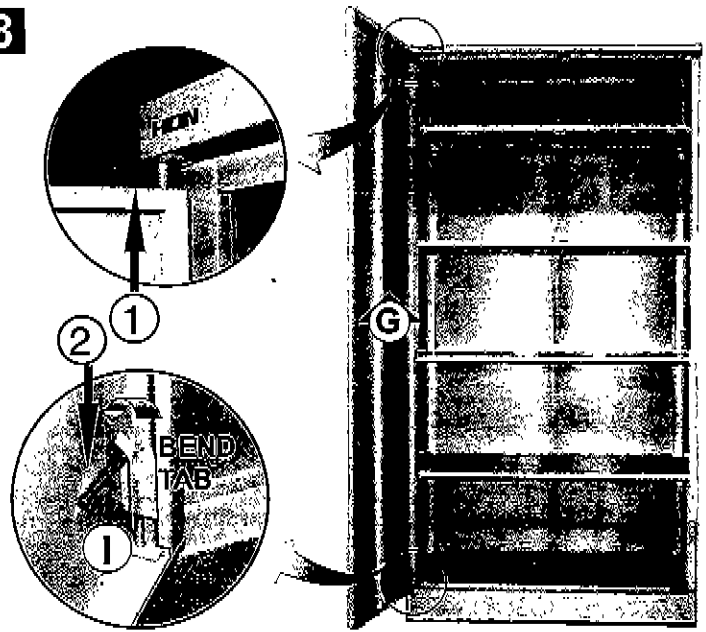
5



6



8



9

